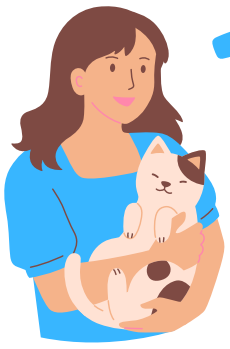


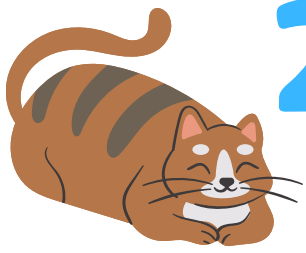
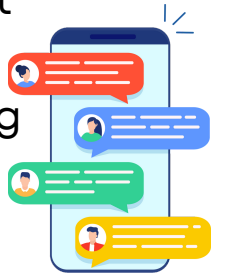
# GETTING STARTED REHOMING YOUR PET



## 1 CHAT WITH JENN, OUR LOVABLE PET REHOMING INTAKE COUNSELOR

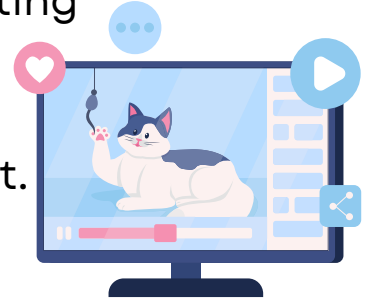
If you are considering placing your pet for rehoming through Pet Rehoming Network, feel free to engage in a live chat with **Jenn** our amazing **Pet Rehoming Counselor** at <https://pet-net.net/chat>

Jenn will help you decide if Pet Rehoming Network is right for you, and which rehoming package you should choose.



## 2 CAREFULLY AND THOROUGHLY COMPLETE OUR INTAKE FORM

Tell us all about your pet by completing our Intake Form as thoroughly as possible. This will be our team's cornerstone for advertising your pet. <https://pet-net.net/request>



## 3 PAY REHOMING FEES

Be sure to pay the rehoming fees when you submit your form, as we will need this to fund your pet's online advertising. Our system is SSL secure, so your payment is completely safe and secure.

## 4 SEND US LOTS MORE PHOTOS AND VIDEO CLIPS OF YOUR PET



The more great photos and video clips of your pet we have to choose from, the better. We will change these up frequently, so upload a good supply to your pet's dedicated Dropbox folder, which our Senior Pet Rehoming Coordinator, Debbie, will send to you once work on your pet's profile is underway.

## 5 CHECK IN WITH US REGULARLY

Once your pet's adoption project is underway, our team will be working behind the scenes continually to get your pet in front of very carefully targeted potential adopters near you.

We will be in touch the **MOMENT** we have someone for your consideration, but **please stay in touch** by checking in with Assistant Pet Rehoming Coordinator, Linda, at <https://pet-net.net/updates>

Be sure to let us know of any changes in your situation or that of your pet so that we can adjust things accordingly.

